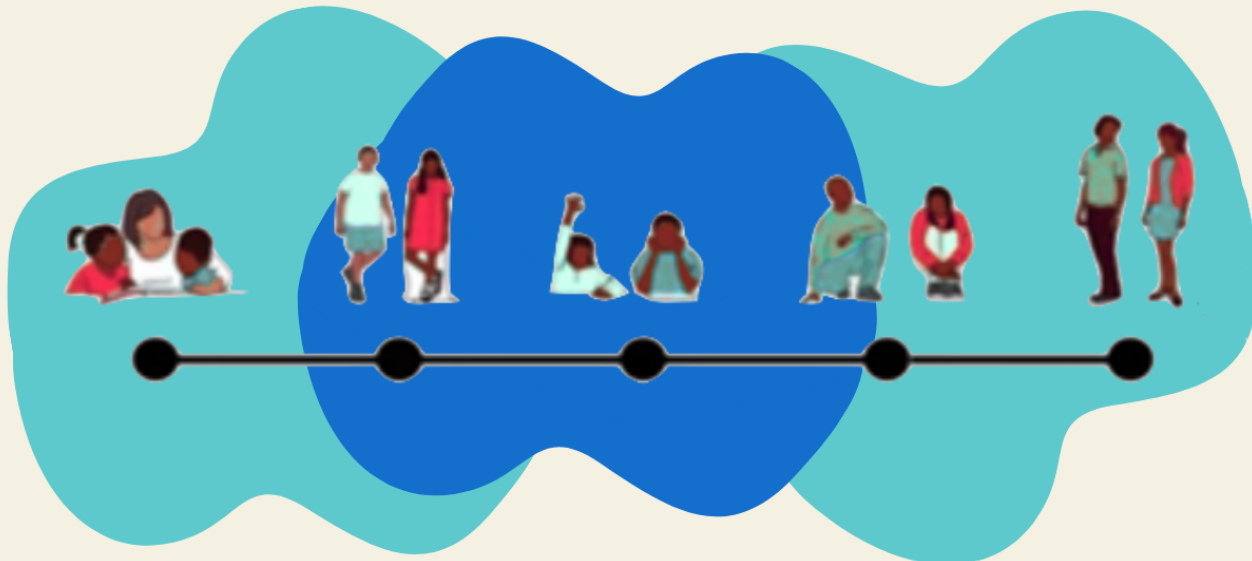


ARE YOU INTERESTED IN GETTING HANDS-ON RESEARCH EXPERIENCE?

JOIN THE SEEDS LAB TODAY!



About Us:

Current Project:

- Our study analyzes social-emotional competencies (SECs) acting as protective factors among adolescents from diverse racial and ethnic backgrounds.
- This research adopts a strengths-based approach and focuses on how SECs develop to support youths' overall social and emotional well-being.
- We are preparing now for data collection at a local high school during the Spring 2024 semester.



interSECTIONS project



Preparing people to lead extraordinary lives

Apply Today!

<http://www.cpligrining.org/student-opportunities.html>

SEND YOUR RESUME/CV

mradulescu1@luc.edu
cligrining@luc.edu

About the Lab:

- **SE**lf-regulation, **E**arly Development, & **S**ettings (SEEDs), directed by Dr. Christine Pajunar Li-Grining
- Our research has involved quantitative, qualitative, and longitudinal data collection, with a focus on education, poverty, intervention, risk, and resilience.

Requirements:

- **Are fluent in speaking and writing in Spanish**
- Sophomore or junior in the 2023-2024 academic year
- Have a GPA of 3.25 or higher
- Available to volunteer 7-10 hours every week